



# PARTNERS FOR PARKINSON'S

2024-2025

PARTNERSHIP OPPORTUNITIES







# PARTNERS FOR PARKINSON'S GIVING SOCIETY

- Every contribution is vital to our success.
- Each year, individuals, foundations, and businesses support our mission through donations, gifts in honor and memory of those who have gone before us, grants, and sponsorships.
- The Partners for Parkinson's Giving Society acknowledges your cumulative assistance throughout the year.
- The Partners for Parkinson's Giving Society page on our website reflects your monthly sustaining donation, your memorial gift, in addition to your event sponsorship, and more at nine levels.
- Recognition varies upon how you apply your gift. Event sponsors will receive additional public announcements of their support in concert with the event's publicity unless otherwise directed by you.
- Our website is updated monthly to show your gift totals as they increase throughout the year.
- Those contributors of \$5,000 and above will be our guests at **Cocktails & Conversations**, our annual gathering honoring top donors.



# YOUR SUPPORT MAKES A DIFFERENCE IN SOUTHWEST FLORIDA

**Our Mission** - We enrich the quality of life and empower people touched by Parkinson's and related neurodegenerative diseases through exceptional programs and services.

**Our Vision** - We foster a supportive community for those touched by Parkinson's disease. Our efforts encompass dedicated support programs, advocacy, raising awareness, and educating both healthcare professionals and the wider community about Parkinson's disease.

## 9 MINUTES

Every nine minutes, someone in the world receives a PD diagnosis. The increasing rate means that PD is projected to exceed Alzheimer's in two decades.

As a Partner for Parkinson's, you allow us to continue our much-needed programming.

PASWFL provides services right here in Southwest Florida to our friends, neighbors, and loved ones affected by PD while national organizations diligently search for a cure.

Research shows that there are approximately 7,000 people in Southwest Florida living with PD. Our goal is to have all **Live Well with PD**.

Our programs are free of charge to members and have been since the PASWFL was founded in 1997. Joining is easy! Membership is Free! Visit our website and complete the membership application/participation waiver. Get active with PD programs now!

Individual donations, event sponsorships, and grants from foundations and businesses ENSURE that our programs continue at NO cost to participants.





# YOUR SUPPORT MAKES A DIFFERENCE FOR OUR YEAR-ROUND PROGRAMS



## MOVEMENT CLASSES

Movement Classes – Growing evidence shows that vigorous exercise may have a neuroprotective effect on people with PD. Exercise slows the progression of the disease! We host 12 group movement classes weekly. These exercise sessions offer a flexible approach that targets multiple symptoms and flexibility, balance, and strength.

**We provided 2,132 “proven,” and effective programs – movement, exercise, speech, education, and support – to more than 12,300 participants in just the past year ending May 31, 2022.**



## EDUCATIONAL PROGRAMS

Our PD Talks empower and enrich those with PD, their care partners, and families to live well with PD. These regularly scheduled presentations are led by professionals who provide information on a wide variety of subjects. In the past 12 months sessions have addressed: symptom management, medication, treatment, PD issues for newly diagnosed, therapies (mobility, speech, physical, occupational) as well as life topics such as coping with hospital stays, long-term care insurance, advanced planning, and much more.



## SUPPORT GROUPS

Professionally and peer-led support groups provide a safe environment in which to share experiences and feelings through the PD journey. We host six different groups for those with PD, their care partners, and their families.



## SPEECH THERAPY

Licensed speech pathologists share strategies and direct practice exercises that increase voice volume, speed of speech breathing, and clearer pronunciation of words



## WELLNESS - JUST FOR FUN

From drumming, meditation, and improvisation, the wellness classes reduce stress and provide opportunities to have fun!



## SOCIAL ACTIVITIES

Organized by peers, these fun outings and activities help reduce the feeling of isolation often associated with Parkinsonisms.



# YOUR SUPPORT MAKES A DIFFERENCE TO MEMBERS OF PASWFL

## Partners for Parkinson's Giving Society Levels

### Benefactor – \$50,000

*Ensures we help local citizens live well with PD for 3 months.*

### Angel – \$25,000

*Provides critical Movement and Exercise Sessions for 4 months.*

### Champion – \$10,000

*Ensures essential speech therapy for 2 months.*

### Steward – \$7,500

*Provides programming for Care Partners for 4 months.*

### Sustainer – \$5,000

*Maintains LCSW services for a month.*

### Ambassador – \$2,500

*Delivers Educational Programs, especially PD Talks, each month.*

### Advocate – \$1,000

*Supports Creative therapies for a month.*

### Supporter – \$600

*Supports our work monthly to help Southwest Floridians live well with PD.*

### Friend – Up to \$599

*Keeps our message strong on a daily basis.*

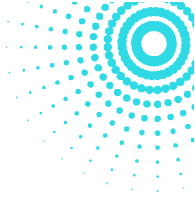


“The Parkinson's Association of Southwest Florida, has been an invaluable resource for my husband who suffers every day from PD. Their support, fundraising events, exercise, and speech classes have been so important and helpful to my husband so he can live a better life with this disease. We can't thank this organization enough for all they do for us and the community.”

**BILL AND SANDY GARRETT**



# EXCEPTIONAL PROGRAMS LOCAL SUPPORT



Florida (and particularly Collier County) has the highest prevalence of Parkinson's per capita in the U.S. Your support makes it possible for us to offer programs and services to help our friends and neighbors live well with PD right here in Southwest Florida.







# EVENT SPONSORSHIP LEVELS

We work closely with sponsors to provide optimal benefits, customizing packages where we are able. Seating capacity varies per level, per event.

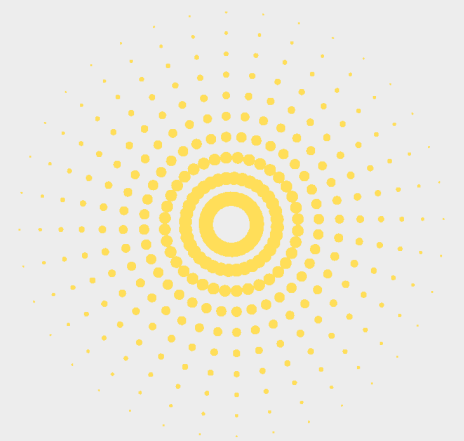
**IN-KIND Donations of Goods or Services are welcome. Each event has different requirements. Placements of names and use of the corporate logo for IN-KIND donations are at the discretion of PASWFL and are based upon a number of factors.**

**EACH opportunity is recognized as a Partner for Parkinson's our annual giving society!**

**EACH activity has opportunities for Naming Sponsorships!**

**Thank you for considering Sponsorship in support of our programs!**

Parkinson's Association of Southwest Florida provides members of our community impacted by Parkinson's Disease access to programs and services that improve quality of life and often delay the disease's progression, helping them to ***Live Well with PD.***



# EVENTS WITH SPONSORSHIP BENEFITS



## BINGO FOR BAGS & BAUBLES - DINNER

**Thursday, October 17, 2024**  
**The Vineyards Country Club, Naples**  
**Registration: \$95 (early reg. \$80), VIP: \$130**  
**Seating Capacity: 240**

*The event celebrates fashion and fun, and dinner is included. Competition abounds as each participant plays 10 games of Bingo to win a designer handbag, baubles, and more!*



## MINGLE & JINGLE FOR PD - EXPO

**Thursday, December 5, 2024**  
**Hilton Naples**  
**Registration: \$25**  
**Seating Capacity: 240**

*The event celebrates fashion and fun with dinner included. Competition abounds as each participant plays 13 games of Bingo to win a designer handbag!*



## STEP UP FOR PARKINSON'S - WALK

**Saturday, February 10, 2024**  
**Baker Park, Naples**  
**Registration: \$30 (early reg. \$25) \$35 in-person**  
**Capacity 500+**

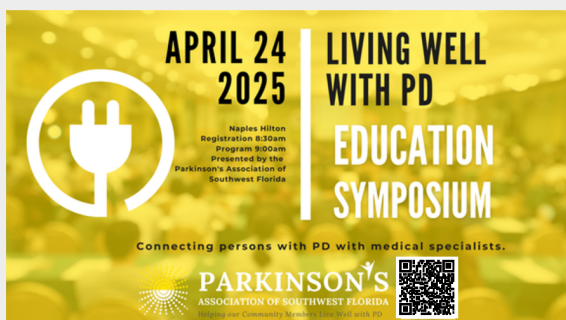
*Since 2000, this event has gathered families impacted by PD together with area life and wellness providers to showcase the value of exercise to staying PD.*



## A STEP FORWARD - OVERCOMING OBSTACLES - LUNCH

**Thursday, March 27, 2025**  
**The Ritz Carlton, Naples**  
**Speaker: Mike Huckabee**  
**Registration: \$300, VIP tickets: \$500**  
**Seating Capacity: 350**

*Our signature fundraising event continues to grow and attract an audience of Naples' philanthropic residents committed to investing in our community by helping people live well with PD.*



## LIVING WELL WITH PD - EDUCATION SYMPOSIUM

**Tuesday, April 24, 2025**  
**Hilton Naples**  
**Registration: \$75 (early reg. \$65), VIP: \$125**  
**Seating Capacity: 250**

*Launched in 2017, our half-day symposium is for those with PD and related neurodegenerative illnesses as well as their care partners. This informative event features medical professionals presenting new treatments and life-affirming practices.*





## SPONSOR CONTRACT 2024-2025

### YOUR SPONSORSHIP MAKES ALL THE DIFFERENCE

- Your generous sponsorship makes it possible for us to provide free membership and proven effective programs to our community members with PD that include movement and exercise, speech therapy, educational events, and social activities.
- Please mark the level and event which works best for you!

### YOUR CHOICE OF EVENT, PROGRAM AND SPONSORSHIP LEVEL

#### PARTNERSHIP LEVEL

**Benefactor** - \$50,000  
(ensures we help local citizens live well with PD for 3 months)  
**Angel** - \$25,000  
(provides critical Movement and Exercise Sessions for 4 months)  
**Champion** - \$10,000  
(ensures essential speech therapy for 2 months)  
**Steward** - \$7,500  
(provides programming for Care Partners for 4 months)  
**Sustainer** - \$5,000  
(maintains LCSW services for a month)  
**Ambassador** - \$2,500  
(delivers Educational Programs, especially PD Talks, each month)  
**Advocate** - \$1,000  
(supports Creative therapies for a month)  
**Supporter** - \$600  
(supports our work monthly to help Southwest Floridians live well with PD)  
**Friend** - Up to \$599  
(keeps our message strong on a daily basis)



#### CHOOSE EITHER PROGRAM OR EVENT SPONSORSHIP

##### PROGRAM PARTNERSHIP

Movement Classes  
Speech Therapy  
Support Groups  
Education

Use where needed most

OR

##### SPECIAL EVENT SPONSORSHIP

**Bingo for Bags & Baubles**

October 17, 2024

**Mingle & Jingle for PD**

December 5, 2024

**Step Up For Parkinson's Walk**

February 8, 2025

**A Step Forward - Overcoming Obstacles**

March 27, 2025

**Living Well with PD - Education Symposium**

April 24, 2025

My Payment of \$ \_\_\_\_\_ is enclosed

Please invoice me.

### CONTACT, PUBLICITY AND CREDIT CARD INFORMATION

Contact Person: \_\_\_\_\_ Phone: (\_\_\_\_\_) \_\_\_\_\_ (C) (O) (H)

Name to appear in program (Company): \_\_\_\_\_

Email: \_\_\_\_\_

Address: \_\_\_\_\_

City \_\_\_\_\_ State: \_\_\_\_\_ Zip: \_\_\_\_\_

### SPONSORSHIP CUSTOMIZATIONS

\_\_\_\_\_  
\_\_\_\_\_  
\_\_\_\_\_  
\_\_\_\_\_

### SIGNATURE \_\_\_\_\_

Sponsor/Business Name: \_\_\_\_\_ Title: \_\_\_\_\_

Parkinson's Representative: Name: \_\_\_\_\_ Title: \_\_\_\_\_

Sponsor Signature: \_\_\_\_\_ Date: \_\_\_\_\_

Parkinson's Signature: \_\_\_\_\_ Date: \_\_\_\_\_

☐ PLEASE CHECK IF YOU WOULD LIKE TO BE CONTACTED ABOUT PLANNED GIVING.

**PLEASE MAKE A COPY FOR YOUR RECORDS** An acknowledgment letter will be sent after the event to the address you provided above.

**Please contact Mary C. Schoeffel at 239-417-3465 or at MSchoeffel@ParkinsonAssociationSWFL.org for more information.**

#### For Office Use

FORM received on \_\_\_\_\_ by \_\_\_\_\_ PAYMENT received on \_\_\_\_\_ by \_\_\_\_\_ Acknowledgement/tax letter sent on \_\_\_\_\_ by \_\_\_\_\_

Parkinson's Association of Southwest Florida is a non-profit charitable organization. IRS 59-3471412; FL CH9341

Parkinson's Association of Southwest Florida

2575 Northbrooke Plaza Drive

Suite # 301 | Naples, FL 34119



239-417-3465

Office@ParkinsonAssociationSWFL.org

ParkinsonAssociationSWFL.org

# PARKINSON'S ASSOCIATION OF SOUTHWEST FLORIDA

## CONTACT US

Parkinson's Association of Southwest Florida

2575 Northbrooke Plaza Drive, Suite 301

Naples, FL 34119

239-417-3465

[Office@ParkinsonAssociationSWFL.org](mailto:Office@ParkinsonAssociationSWFL.org)

## HELPING YOU

 **Live Well**  
**WITH PD**